



GOLF





GOLD FLEX

GOLF SWING TRAINER FOR TEMPO & FLEXIBILITY

48-INCH
3,990.-

40-INCH
3,390.-

Durable polyurethane head

Flexible fiberglass shaft teaches lag and helps eliminate early release/casting

Shaft length helps flatten the swing plane



The Gold Flex golf swing trainer is designed to improve swing tempo, strength, and flexibility. The exaggerated flex in the shaft helps lengthen your swing by keeping your hands and arms extended. This creates power to help you bomb your drive and gain more distance. The extra flex also encourages a slight lag at the top of your back swing, establishing the ideal swing tempo.

- ✓ 10-20 swings every day will improve swing tempo, strength, and flexibility
- ✓ Easy to use – simply “swing” the Gold Flex back and forth continually without stopping at impact position, as if swinging to a metronome
- ✓ Fights slices and flattens the swing
- ✓ Low-impact stretch for pre-round warm-up
- ✓ Fits easily in golf bag – legal to carry on course
- ✓ Best selling golf swing trainer





GOLD DRIVE 6,290.-

SPEED AND CONSISTENT SWING



- ✓ Helps athletes improve their club head speed and technique to create a more consistent swing
- ✓ Includes two weights that can be configured into three club weights to work on overall swing for overload, underload, and counterweight training
- ✓ Use only the shaft with no weights attached to warm up and build muscle memory with a 20% lighter club
- ✓ Attach only the counterweight (yellow) to help practice hand speed through impact
- ✓ Train with both the head (black) and counter (yellow) weights to help increase overall swing speed with a 20% heavier club
- ✓ Weights easily twist in to place and are designed to fall off if not attached properly



Increase overall swing speed



Use only the shaft with no weigh attachments to warm up and build muscle memory with a 20% lighter club

Attach only the counterweight (Yellow) to help practice hand speed through impact



Helps athletes improve their club head speed and technique to create a more consistent swing



Includes two weights that can be configured into three club weights to work on overall swing for overload, underload, and counterweight training



GRIP TRAINER 790.-

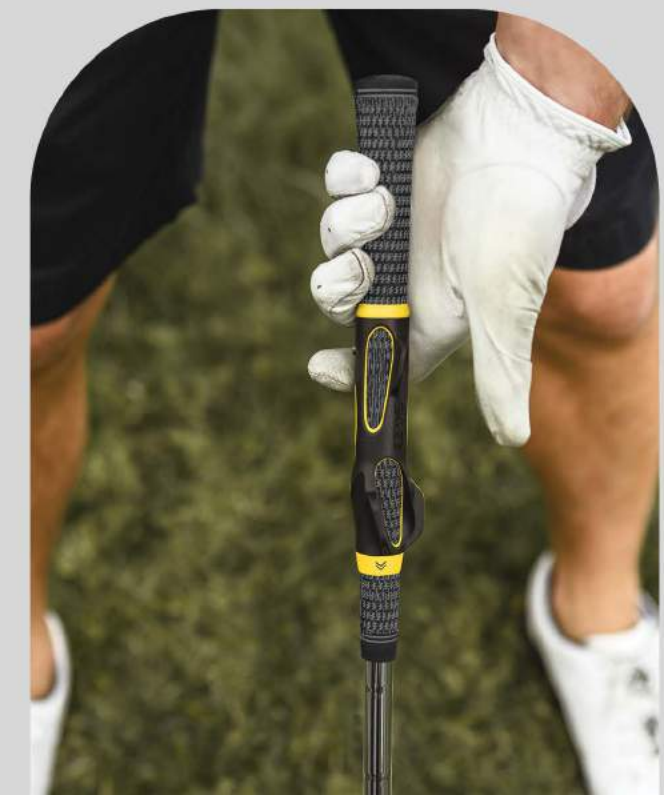
REMOVABLE HAND POSITIONING GUIDE



The Grip Trainer fits all hand sizes, to correct and instill muscle memory for proper hand positioning and grip



- ✓ Creates muscle memory for proper hand positioning and grip
- ✓ Attaches to most clubs from driver through wedge
- ✓ Small enough for your bag
- ✓ Perfect for practice or pre-round range sessions
- ✓ Built for right-handed golfers
- ✓ For use on standard size grips



ACCELERATOR PRO 2,990.-

INDOOR PUTTING GREEN WITH BALL RETURN

Practice your stroke anywhere, anytime with this 9 foot true-roll indoor putting green. Accelerator Pro features alignment guides at 3, 5, and 7 feet to improve consistency and control, building confidence in your stroke.

3*20.5 inches

12 inches

Accelerator pro mat

9 Feet

Gravity ball return

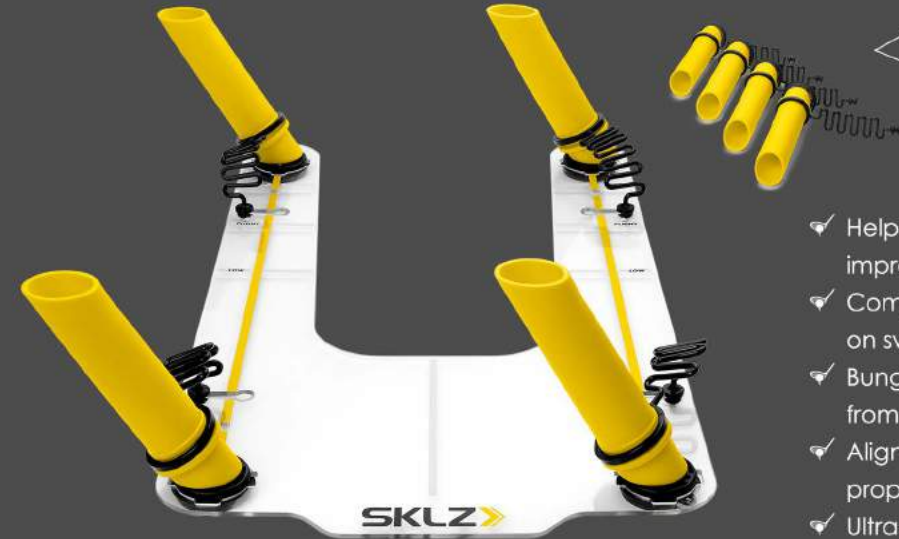
Removable ball tracks

Track connectors

- ✓ Develops accuracy and control with squaring and alignment guides at 3, 5 and 7 feet
- ✓ Train without interruption using the continuous ball return
- ✓ Emulates true-roll surface with upslope at the cup and a stimp reading similar to actual greens
- ✓ Indoor putting green and ball return measures 9 feet by 16.25 inches

SWING GUIDE TRAINER 3,390.-

CONSISTENCY AND ACCURACY



- ✓ Helps develop a more reliable swing for improved accuracy and increased distance
- ✓ Composite guides provide instant feedback on swing path and plane
- ✓ Bungee and magnet system prevent guides from flying away on impact from missed shots
- ✓ Alignment markers help build and reinforce proper setup and ball position
- ✓ Ultra-durable polycarbonate base

19 inches

11 inches

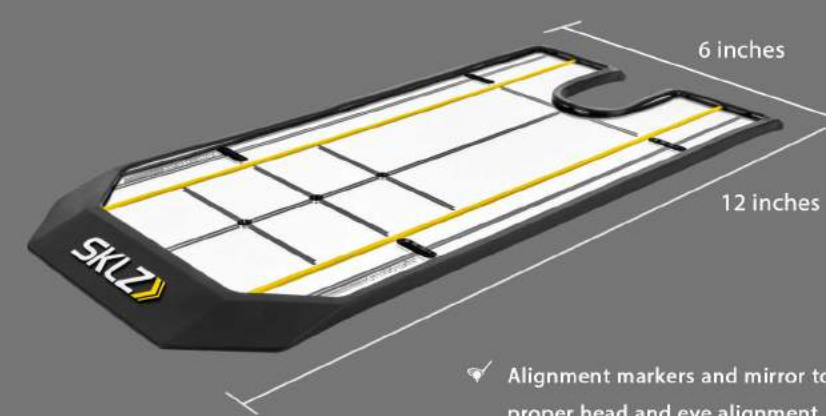


ACCURACY

PUTTING

TRUE LINE PUTTING MIRROR 1,390.-

PRACTICE CONSISTENT HEAD AND EYE



6 inches

12 inches

Premium putting mirror with ball cutout to putt directly from the green.

- ✓ Alignment markers and mirror to practice proper head and eye alignment
- ✓ Slots to create putt gates with tees for any putter head
- ✓ Putter path lines for square takeback and follow through
- ✓ Convenient size for throwing in golf bag to take to the practice green
- ✓ Non-slip base mirror measures 6½" x 12"

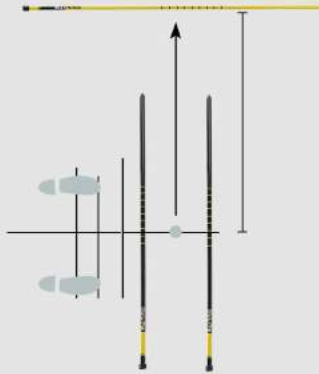
PUTTING

ACCURACY

Pro Rods 1,390.-

3-ROD ALIGNMENT SET

The Pro Rods set creates a consistent alignment routine during pre-swing set up. Each rod features 9 rings for multiple configuration options. This allows you to work on basic putting, and distance alignment as well as your total swing plane.



MOVE TO DESIRED DISTANCE



- ✓ Three durable, 48-inch fiberglass rods for developing consistent alignment and proper swing mechanics
- ✓ Creates a consistent alignment routine during pre-swing setup
- ✓ Each rod features 9 rings for precise setup, ball alignment and ball- striking
- ✓ Versatile training tool – use for full swing, short game, putting and set-up
- ✓ Rubber safety cap on one end; pointed on the other end to easily stick into the ground

DISTANCE

ACCURACY



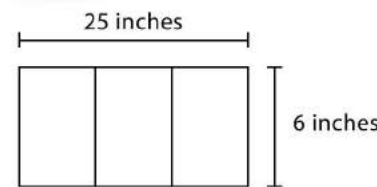


PURE PRACTICE MAT 3,390.-

PRACTICE AT HOME ON THE TEE TURF, FAIRWAY



- Practice almost any shot from tee to green with this three-surface hitting mat
- Tee Turf holds real tees for more accurate practice shots found on the course
- Fairway cut simulates long and short iron shots from the middle of the fairway with a tight lie
- 1st cut rough helps you practice ball striking in deeper lies and improve recovery shots
- Durable hitting mat built to last through multiple seasons of use
- Tri-fold turf mat measures 25"x 16"



LAUNCH PAD 2,190.-

3-IN-1 HITTING MAT

The Launch Pad allows the golfer to hit from multiple conditions and enhance their swing

- 2" tee for use with driver
- 1" tee for use with fairway wood, hybrid club, and irons
- Clean fairway lies (0.5 inch tall grass) or thicker
- Thicker rough lies (1.5 inch tall grass)
- 12" x 23.5" heavy-duty non-slip rubber hitting mat with realistic grass



- ✓ Perfect addition to home practice ranges
- ✓ Mat can be used anywhere you can swing a club



PACKAGE include
 • Launch Pad
 • Tees (2)

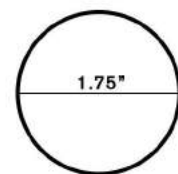




IMPACT GOLF BALL 550.-

INDESTRUCTIBLE GOLF PRACTICE BALL

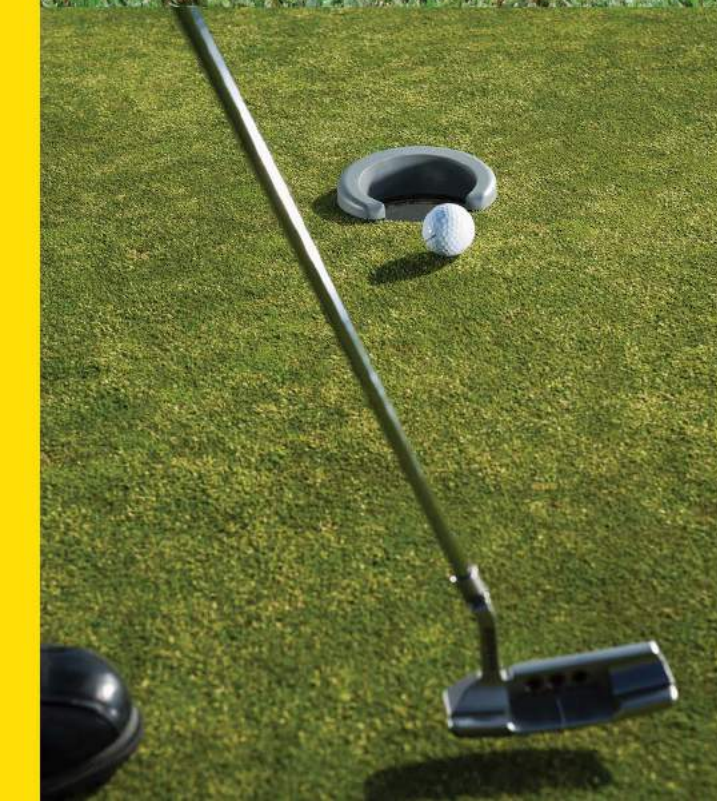
Limited true-flight Impact Golf Balls are regulation size and dent resistant for long-lasting training



PACKAGE include
 Impact golf ball pack of 12



- ✓ Mini size improves hand-eye coordination
- ✓ Pop-back material collapses on impact, but won't dent
- ✓ Limited flight design means you can swing away wherever you train
- ✓ Comes in pack of 12



PUTT POCKET 590.-

WEIGHTED PUTTING ACCURACY TRAINER

Putt Pocket is the easy-to-use trainer that shrinks practice cups, helps you build focus and increases your putting confidence.



Weighted accuracy trainer
 Internal lip fits into standard cups
 Additional weight with grip bottom

2.75"

PACKAGE include
 Putt Pocket
 Base weight



- ✓ Shrinks practice cups to promote on-course putting skills
- ✓ Helps you quickly improve reads, putt speeds and accuracy
- ✓ Trains you to hit the high side of the hole where more putts get made
- ✓ Easily fits into your bag for practice at the course or home on mats



Base fills with water for stability

Base fills with water for stability

Base fills with water for stability

Base fills with water for stability

SMASH BAG 1,590.-

IMPACT TRAINER

The Smash Bag aids in helping the golfer feel the correct impact using a proper swing

PACKAGE include
 Smash Bag
 Usage guide



- ✓ Teaches the feeling of the correct impact, eliminates fat and thin shots and helps cure slices
- ✓ Proprietary target map provides visual feedback on the quality and accuracy of impact
- ✓ Quickly fills with towels or clothes
- ✓ Use at home or on the range
- ✓ Safe for you and your clubs
- ✓ Heavy-duty, high-impact material and zipper
- ✓ Includes loop for staking into the ground



PURE PAHT 1,590.-

SWING PATH FEEDBACK TRAINER

The Pure Path aids in correcting the golfer's swing

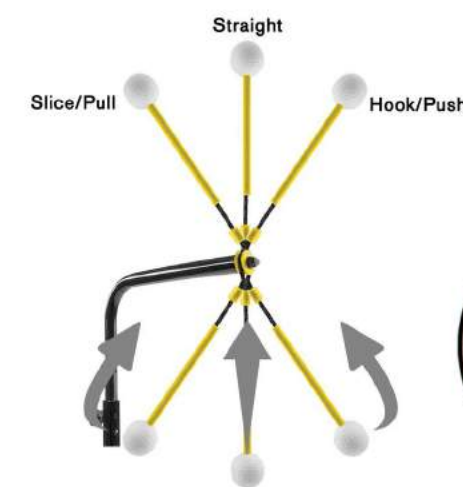


Highly visible path indicator

Secure knob

True ball feel

Stable and durable ground stake



PACKAGE include
 Pure Path
 Usage Guide

- ✓ Helps correct pushes, pulls, slices and hooks
- ✓ Gives immediate feedback on swing path
- ✓ Sets up quickly and easily – stakes into the ground to eliminate the need for a practice net
- ✓ Ball material delivers durability and true feel of contact
- ✓ Upright adjustability for use with drivers, hybrids and irons
- ✓ Sturdy construction





UNIVERSAL GOLF TARGET 1,190.-

MUTITARGET TRAINER

- ✓ Adjustable swing target provides instant feedback on where you're starting your shot without lifting your head early
- ✓ Designed with three deep pockets to work on controlling ball flight
- ✓ Can be attached to most golf nets with two adjustable straps
- ✓ Three pockets allow you to work on different chip shots around the green
- ✓ Target measures 2.5' x 2.5'



QUICKSTER CHIPPING NET 1,990.-

MUTITARGET TRAINER



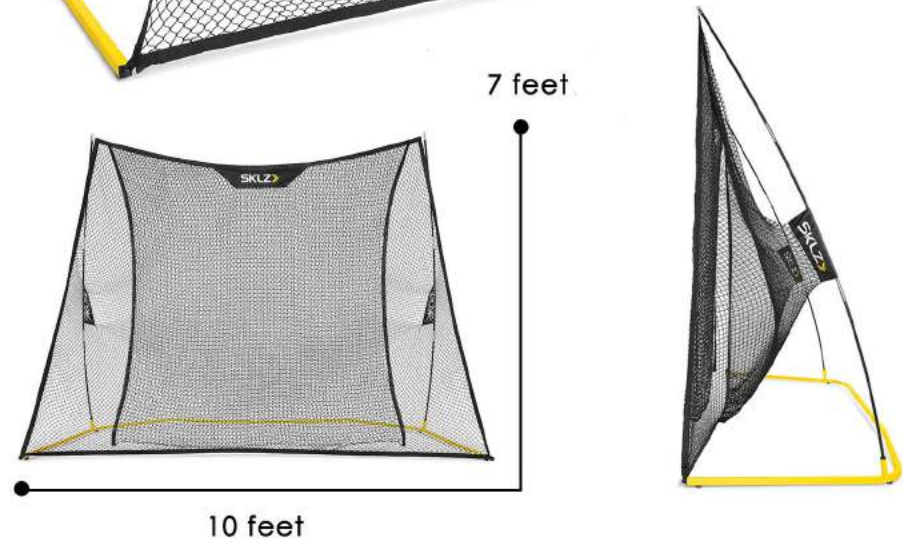
Practice your short game anytime, anywhere

- ✓ Three different sized target holes for great accuracy practice and ball collection slot along the bottom
- ✓ Great addition to your home practice range
- ✓ Can be used with regular and practice golf balls
- ✓ Sets up and breaks down in 30 seconds
- ✓ Lightweight and portable – folds into included nylon carry bag
- ✓ Patented Tension-Tite™ technology



- PACKAGE include**
- Chipping Net
 - Carry bag
 - Usage guide





HOME RANGE KIT 6,790.-

The SKLZ Home Range Golf Net is the perfect net to work through every club in your bag from the convenience of your home. Featuring a large, dual net, the Home Range Golf Net provides a smooth ball return for the biggest drives and softest wedge shots.

- ✓ Perfect net to work through every club in your bag from the convenience of your home
- ✓ Dual net provides a smooth ball return for the biggest drives and softest wedge shots
- ✓ Large net gives you space to start shaping your draw or fade
- ✓ Durable net for seasons of use when you can't get to the range or course
- ✓ Easy to setup and comes with convenient storage bag
- ✓ Frame measures 10' x 7' with front collection net measuring 6'6" x 6'6"





-  DISTANCE
-  ACCURACY
-  PRACTICE



HOME DRIVING RANGE KIT

5,990.-

This kit includes everything you need to work on your swing at home from driver to wedge. The Home Driving Range Kit includes a 7' practice net, 12 limited-flight Impact Golf Balls, Launch Pad with rough and fairway lies and a 1" and 2" rubber tees. Sets up easily in your backyard, garage or basement.



- ✓ Everything you need to work on your swing at home from driver to wedge
- ✓ Includes 7' Practice Net, 12 Impact Golf Balls, Launch Pad and two rubber tees (1" and 2")
- ✓ 7' Practice net utilizes tent technology for quick assembly and take down
- ✓ Limited flight Impact Golf Balls are durable, dent resistant, and allow you to train in small spaces
- ✓ Launch Pad dual surface hitting mat allows you to practice hitting off fairways and out of the rough

Limited flight Impact Golf Balls are durable and dent resistant



Launch Pad dual surface hitting mat allows you to practice hitting off fairways and out of the rough

12 Impact Golf Balls, Launch Pad and two rubber tees





BEST ELIXIR

 www.bestelixir.com

 SKLZ Thailand

 @bestelixir

094-153-5491